

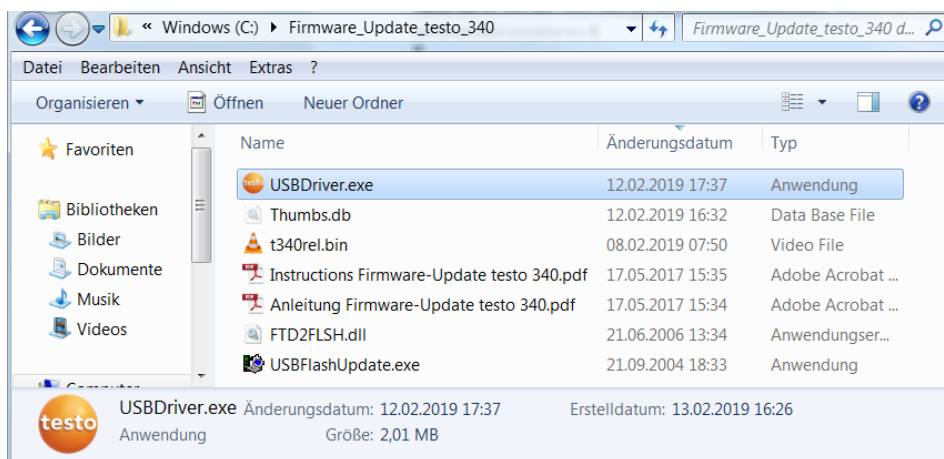
Instructions Firmware-Update testo 340

1. Installation of the Testo instrument driver

To be able to communicate with the Testo measuring instruments, our device driver must be installed on your computer.

Follow these steps:

1. Open the folder **Firmware_Update_testo_340**
2. Start the program **USBDriver.exe** by double-clicking



3. Please confirm system messages to authorize the driver installation.
4. The installation of the drivers is started by clicking **Next**.

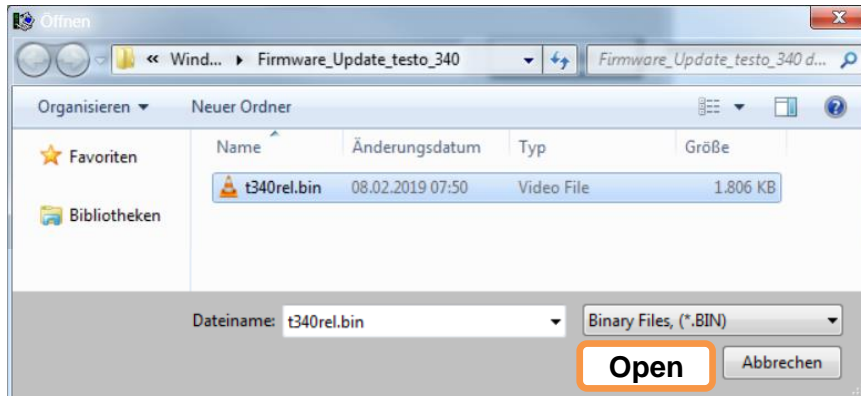


5. Then click **Finish** to complete this process.

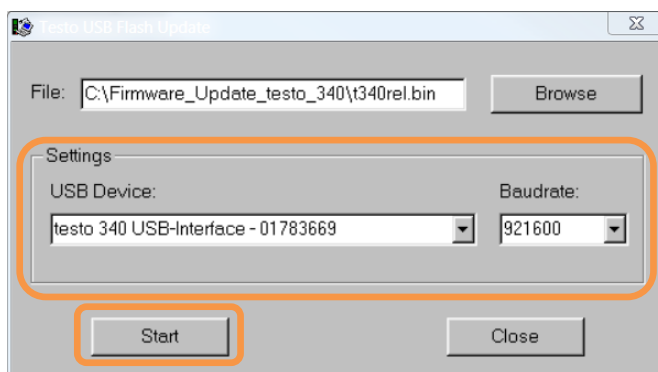


Instructions Firmware-Update testo 340

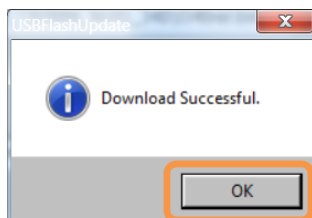
9. In the **Firmware_Update_testo_340** folder, select the **t340rel.bin** file and click **Open**



10. Select the following settings:
- a. **USB Device:** **testo 340**
 - b. **Baudrate:** **921600**



11. Click **Start** to start the firmware update of the testo 340
12. Click on **OK** to confirm the successful firmware update of the testo 340



13. Then close the "Testo USB Flash Update" program by clicking **Close**