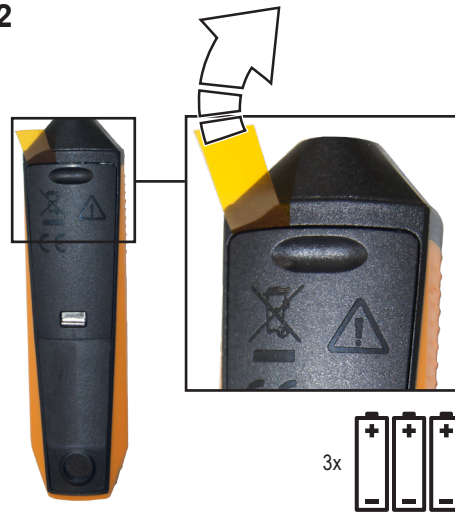


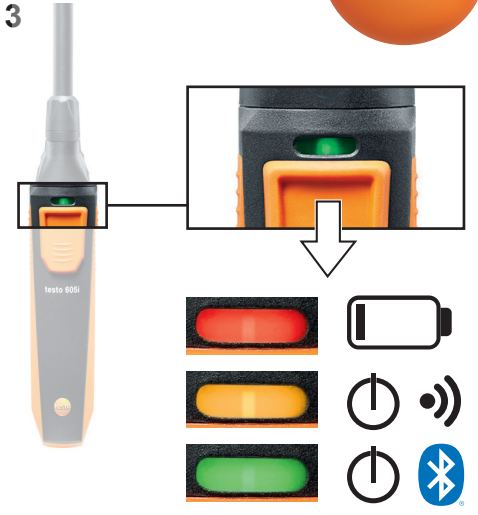
1



2



3



4



5









<p>218 x 30 x 27 mm 8.6 x 1.2 x 1.0 in</p>	<p>-20...+50 °C -4...+122 °F</p> <p>-20...+60 °C -4...+140 °F</p>	<p>3x AAA Alkaline</p>	<p>T: 0.1 °C 0.1 °F</p> <p>U: 0.1 %RH</p>	<p>T: -20...+60 °C -4...+140 °F</p> <p>U: 0... 100 %RH</p>	<p>± 1 digit</p> <p>T: ± 0.8 °C (-20... 0 °C) ± 1.44 °F (-4... +32 °F)</p> <p>± 0.5 °C (0... +60 °C) ± 0.9 °F (+32... +140 °F)</p> <p>U: ± 3.0 %RH (10... 35 %RH) ± 2.0 %RH (35... 65 %RH) ± 3.0 %RH (65... 90 %RH) ± 5.0 %RH (<10 %RH or >90 %RH) @ +25 °C ± 1 °C / +77 °F ± 1 °F</p> <p>Hysteresis: ± 1.0 %RH</p> <p>Long term stability/year: ± 1.0 %RH/year</p>

Approvals and Certification

Product 产品名称	testo 605i
Mat.-No. / 型号	0560 2605
Date / 日期	23.04.2021

i The use of the wireless module is subject to the regulations and stipulations of the respective country of use, and the module may only be used in countries for which a country certification has been granted. The user and every owner has the obligation to adhere to these regulations and prerequisites for use, and acknowledges that the re-sale, export, import etc. in particular in countries without wireless permits, is his responsibility.

Country	Comments
Australia	 E 1561
Brazil	 04851-19-04701 Agência Nacional de Telecomunicações See Brazil Information
Canada	Product IC ID: 6127B-05602605 See IC Warnings
China	CMIT ID: 2020DJ5782
Europa + EFTA	 i Hereby, Testo SE & Co. KGaA declares that the radio equipment type testo 605i (0560 2605) is in compliance with Directive 2014/53/EU. The full text of the EU declaration of conformity is available at the following internet address: https://www.testo.com/eu-conformity EU countries: Belgium (BE), Bulgaria (BG), Denmark (DK), Germany (DE), Estonia (EE), Finland (FI), France (FR), Greece (GR), Ireland (IE), Italy (IT), Latvia (LV), Lithuania (LT), Luxembourg (LU), Malta (MT), Netherlands (NL), Austria (AT), Poland (PL), Portugal (PT), Romania (RO), Sweden (SE), Slovakia (SK), Slovenia (SI), Spain (ES), Czech Republic (CZ), Hungary (HU), Republic of Cyprus (CY). EFTA countries: Iceland, Liechtenstein, Norway, Switzerland  WEEE Reg. no.: DE 75334352#
India	Authorized
Malaysia	Type Approval Code: RGNH/02A/0321/S(21-1024)
South Africa	TA-2019/547
Türkiye	Authorized
UAE	testo 605i: ER78468/20
United Kingdom (UK)	 i The UK Declaration of Conformity can be found on the testo homepage www.testo.com under the product specific downloads.
USA	 WAF-05602605 See FCC Warnings

Bluetooth® Information / 蓝牙信息	Feature 特征与参数	Values 数值
	Bluetooth® range / 范围	up to 100 m / 328 ft / 100 无障碍场地
	Radio Type / 类型	Bluetooth® Low Energy (BLE) 4.2
	Bluetooth® company / 制造商	Lierda Science & Technology Co., Ltd Lierda LSD4BT-S37
	RF Band / 射频频段	2402 – 2480MHz
	Power output [E.I.R.P.] / 输出功率	16.94 dBm
Bluetooth® SIG Listing	Declaration ID	D043363
	Member company	Testo SE & Co. KGaA

IC Warnings

CAN ICES-003(B)/NMB-003(B)

This Class B digital apparatus complies with Canadian ICES-003. Cet appareil numérique de la classe [B] est conforme à la norme NMB-003 du Canada.

RSS-Gen & RSS-247 statement

This device complies with Industry Canada licence-exempt RSS standard(s).

Operation is subject to the following two conditions:

- (1) this device may not cause interference, and
- (2) this device must accept any interference, including interference that may cause undesired operation of the device.

Le présent appareil est conforme aux CNR d'Industrie Canada applicables aux appareils radio exempts de licence.

L'exploitation est autorisée aux deux conditions suivantes :

- (1) l'appareil ne doit pas produire de brouillage, et
- (2) l'utilisateur de l'appareil doit accepter tout brouillage radio-électrique subi, même si le brouillage est susceptible d'en compromettre le fonctionnement.

Caution: Radio Frequency Radiation Exposure

This equipment complies with IC radiation exposure limits set forth for an uncontrolled environment and meets the IC radio frequency (RF) Exposure Guidelines. This equipment should be installed and operated keeping the radiator at least 20 cm or more away from person's body in normal use position to ensure compliance with RF exposure requirement.

Co-Location

This transmitter must not be co-located or operated in conjunction with any other antenna or transmitter.

Attention : exposition au rayonnement de radiofréquences

Cet équipement est conforme aux limites d'exposition aux radiofréquences IC fixées pour un environnement non contrôlé et aux Lignes directrices relatives à l'exposition aux radiofréquences (RF). Cet équipement doit être installé et utilisé en gardant le radiateur à une distance d'au moins 20 cm du corps humain en position normale d'utilisation pour garantir la conformité à d'exposition aux RF.

Co-location

Ce transmetteur ne peut pas être installé en colocation ou être utilisé avec une autre antenne ou transmetteur, quel qu'en soit le type.

FCC Warnings

Information from the FCC (Federal Communications Commission)

For your own safety

Shielded cables should be used for a composite interface. This is to ensure continued protection against radio frequency interference.

FCC warning statement

This equipment has been tested and found to comply with the limits for a Class B digital device, pursuant to Part 15 of the FCC Rules. These limits are designed to provide reasonable protection against harmful interference in a residential installation. This equipment generates, uses and can radiate radio frequency energy and, if not installed and used in accordance with the instructions, may cause harmful interference to radio communications. However, there is no guarantee that interference will not occur in a particular installation. If this equipment does cause harmful interference to radio or television reception, which can be determined by turning the equipment off and on, the user is encouraged to try to correct the interference by one or more of the following measures:

- Reorient or relocate the receiving antenna.
- Increase the separation between the equipment and receiver.
- Connect the equipment into an outlet on a circuit different from that to which the receiver is connected.
- Consult the dealer or an experienced radio/TV technician for help.

Caution

Changes or modifications not expressly approved by the party responsible for compliance could void the user's authority to operate the equipment. Shielded interface cable must be used in order to comply with the emission limits.

Warning

This device complies with Part 15 of the FCC Rules.

Operation is subject to the following two conditions:

- (1) this device may not cause harmful interference, and
- (2) this device must accept any interference received, including interference that may cause undesired operation.

Caution: Radio Frequency Radiation Exposure

This equipment complies with FCC radiation exposure limits set forth for an uncontrolled environment and meets the FCC radio frequency (RF) Exposure Guidelines. This equipment should be installed and operated keeping the radiator at least 20 cm or more away from person's body in normal use position to ensure compliance with RF exposure requirement.



Co-Location

This transmitter must not be co-located or operated in conjunction with any other antenna or transmitter.

Brazil Information

Este equipamento não tem direito à proteção contra interferência prejudicial e não pode causar interferência em sistemas devidamente autorizados. Este equipamento não é apropriado para uso em ambientes domésticos, pois poderá causar interferências eletromagnéticas que obrigam o usuário a tomar medidas necessárias para minimizar estas interferências.

Para maiores informações, consulte o site da Anatel – <https://www.gov.br/anatel/pt-br/>

Mat.-No.	0564 2605 55
Country	Comments
Japan	Contains Lierda S37 BLE module  201-200983 See Japan Information
South Korea	 R-R-TTT-testo605i See KCC Warning

Bluetooth® Information	Feature	Values
	Bluetooth® range	Up to 100 m / 328 ft (free field)
	Radio Type	Bluetooth® Low Energy (BLE) 4.2
	Bluetooth® company	Lierda Science & Technology Co., Ltd Lierda LSD4BT-S37
	RF Band	2402 – 2480MHz
	Power output [E.I.R.P.]	9.37 dBm
Bluetooth® SIG Listing	Declaration ID	D043363
	Member company	Testo SE & Co. KGaA

KCC Warning

해당 무선 설비는 운용 중 전파혼신 가능성이 있음.

Japan Information

当該機器には電波法に基づく、技術基準適合証明等を受けた特定無線設備を装着している