

# Testo FlashUpdate

## *Instrument Software Update and Download Instructions*

### Contents

1. .... How to Download Instrument Software  
and Updates from the Internet
  
2. .... How to use the Flash Program
  - 2.1 .... Instrument-Preparation before Flashing
    - 2.1.1 .... Preparation of testo 300 M/XL and testo 400/650/950
    - 2.1.2 .... Preparation of Control Unit for testo 300XXL, testo 350 M/XL  
as well as Control Unit for testo 454
    - 2.1.3 .... Preparation of testo 454 Logger Unit
  
  - 2.2 .... Execute Software Flash Program
    - 2.2.1 .... Start **FlashUpdate** Program
    - 2.2.2 .... Select Firmware File
    - 2.2.3 .... Check the Settings
    - 2.2.4 .... Start Update Process
    - 2.2.5 .... Messages
  
3. .... Customer Service

# 1. How to Download Instrument Software updates from the Internet

Testo strives to improve instrument performance and operation and provide these improvements as a free download from the Testo Web page.

This **short description** shows you how to download the files to your computer.

If you have any questions on how to perform any of these procedures, please contact **Testo's Customer Service**.

## HINT:



So that you can find the downloaded files easily, they were extract into the directory **C:\Testo** as default.

- Please open the address **www.testo.de** with your Internet-Browser.
- Click on the menu entry **Service & Support**. A menu opens.
- Click now on **Downloadcenter**

File Edit View History Bookmarks Tools Help

http://www.testo.de/online/abaxx-?part=PORTAL.DEU.Applications&event=show-from-menu Exalead

testo

Jobs & Karriere | Presse | Sitemap | Kontakt | Impressum Suchen  OK

Produkte & Branchen Training & Seminare Service & Support Firmendarstellung My testo

Home > Service & Support > Download-/Info-Center

- Serviceleistungen
- Testo Kontaktadressen
- Maßeinheiten umrechnen
- Download-/Info-Center**
  - Fachbibliothek
  - Broschüren
  - Bedienungsanleitungen
  - Presseinformationen
- Händlersuche
- testo industrial services

### Download Center

Willkommen beim Testo Downloadcenter. Hier werden Ihnen aktuelle Service-Packs, Tools, etc. zum Download zur Verfügung gestellt. Bitte wählen Sie unten die für Sie relevante Kategorie aus. Sie können anschließend die jeweiligen Dateien direkt herunterladen.

- > Comfort Software V3.x (Treiber, Service Packs & Demoversion)
- > Gerätesoftware Updates (Firmware)**
- > Kältemittel für elektronische Monteurhilfen
- > Kältemittel für die Kälteanlagen-Analysegeräte testo 556/560
- > PC-Software Testo easyheat
- > PC-Software Testo easyEmission
- > PC-Software Testo easyKool
- > Testo Toolbox & Protokollbeschreibung
- > Sonstiges
- > Testo 330 / Testo 335 Downloads
- > Testo USB-Treiber
- > PC-Software für acdoor-Geräte

Benutzername   
Passwort  OK

Registrierte Nutzer können das erweiterte Online-Angebot nutzen  
**Eine Registrierung ist für das Einsehen von Produktpreisen das direkte Bestellen im > Testo Online-Shop und die Nutzung weiterer Zusatzdienste erforderlich.**  
**> Kostenlose Registrierung**  
> Passwort vergessen?

Ihr Warenkorb / Anfrageliste ist leer.

> Produkte & Branchen > Training & Seminare > Service & Support > Firmendarstellung > Jobs & Karriere > Presse > Sitemap > Kontakt > Impressum  
Copyright © testo AG 2006

Done

Click now on **Instrument-Software Updates (Firmware)**

The screenshot shows the testo website interface. At the top, there is a navigation bar with links for 'Jobs & Karriere', 'Presse', 'Sitemap', 'Kontakt', and 'Impressum'. Below this is a search bar and a main menu with categories: 'Produkte & Branchen', 'Training & Seminare', 'Service & Support', and 'Firmendarstellung'. The 'Service & Support' section is active, displaying 'Download: Gerätesoftware Updates (Firmware)'. The text explains that users should download the 'FlashUpdate' program and the firmware for their device. A list of supported devices is provided, including Control Unit testo 300XXL, testo 350M/XL, testo 454, Logger testo 454, Analysebox testo 300XXL, testo 350M/XL, testo 400/650/950, and testo 300 M/XL. Two download links are highlighted: 'Download Kurzanleitung (PDF, 1.48 MB)' and 'Download FlashUpdate (EXE, 637.0 KB)'. On the right side, there is a 'My testo' sidebar with a login form for 'Benutzername' and 'Passwort', and a note about registration.

Click on **Download FlashUpdate** to download the program for updating your device. You will need this to do firmware updates to testo devices.



**Note:**

If the program **FlashUpdate** was already installed on your computer you only have to download the firmware for your testo device.

The following testo instrument updates Updates are available:

- testo 300 M/XL
- Control Unit for testo300XXL, for testo350M/XL, testo 350-S and for testo 454
- testo 314
- testo 400/650/950 – V 1.3x (only with Comfort Software v2.51 or former)
- testo 400/650/950 – V 2.0x (only with Comfort Software v3.0 or later)
- testo 454 Logger (4 channel)

It is recommended to download the firmware files for the testo 454 measuring system and for the control unit if you use the testo 350/454 measuring system.

## Download process

If you click on **Download FlashUpdate** A message appears and you will be asked how you want to open the file.

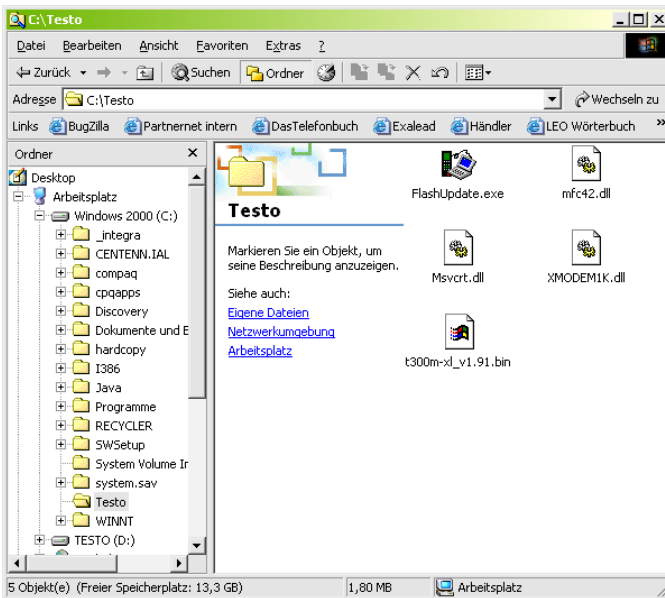
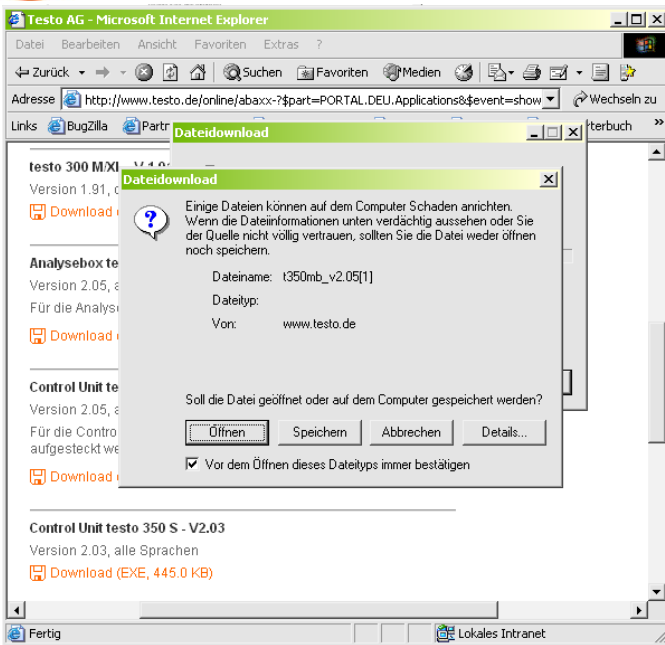
Please choose: **Continue/Open**

You see the following window

After click on **Extract** the files will be copied into the directory **C:\Testo** There you will find the files.

If the process was succeeded you see the following message:

- Please download now the instrument firmware for your device.  
You only have to click on download under the several device firmware.
- Download now the firmware to your device



In Windows open now **My Computer** after the download has been finished.

Select the directory in which the files are stored. (default path C:\Testo).

Start now the program **FlashUpdate**.



FlashUpdate.

## 2. How to use the Flash Program and update the instruments' internal software

These **instructions** show you how to use the Flash Program and how to update (flash) the instrument software.



### **NOTE:**

Please make sure all necessary files were downloaded to your computer before you continue with this procedure. If you are not sure, please review the download instructions at the beginning of this manual and double check if everything was done correctly!

### ***System requirements***

- Pentium 133 and higher; 16 MB Ram
- High Color Graphic Card, Serial port, Mouse
- Windows™ 95/98/ME/NT/2000/XP

## 2.1 Instrument – Preparation before flashing

### ***Prior to updating***

In order to update the instrument with the latest software, you need to prepare the respective instrument for data transfer.



### **Sequence - Note:**

- 1<sup>st</sup> Prepare the instrument
- 2<sup>nd</sup> Flash the instrument


### 2.1.1 Preparation of testo 300 M/XL, testo 314 and testo 400/650/950

- (1) Please remove all batteries, rechargeable batteries and the mains supply.
- (2) Connect the RS232 serial cable (0409.0178) to the computer.  
The other end will be connected to the instrument.
- (3) Further activate the "arrow up"-key. Keep this key activated while plugging in the power pack or mains supply.
- (4) Please wait until you get the message "NO CONNECTION" on the display of the instrument.



**Now the instrument is prepared for updating.  
Go to step " 2.2 Execute Software Flash Program " and follow the instructions.**

### 2.1.2 Preparation of Control Unit for testo 300XXL, testo 350M/XL as well as Control Unit for testo 454


- (1) Disconnect all (rechargeable) batteries from the Control Unit (white connector) and plug off the mains supply
- (2) Connect the RS232 serial cable (0409.0178) to the computer  
The other end will be connected to the Control Unit. For the Control Unit use the port that is labeled "**RS232**".
- (3) On the Control Units' key-pad press the blue & white up arrow (  )  
and keep that button pressed while plugging in the power pack or mains supply.
- (4) Please wait until the message:  
**"FLASH ACTIVE – NO CONNECTION – BAUDRATE:  
115200 - VERSION x.xx"** appears on the display



**Now the instrument is prepared for updating.  
Go to " 2.2 Execute Software Flash Program " and follow the instructions.**



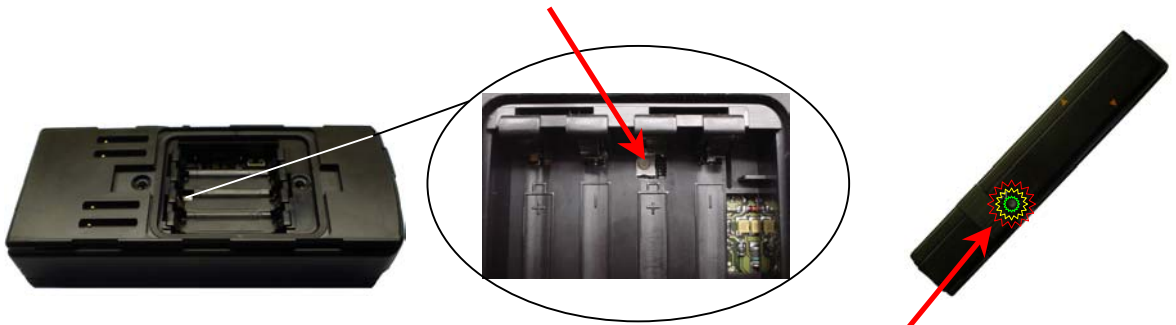
### 2.1.3 Preparation of testo 454 Logger Unit

- (1) First, connect the RS232 serial cable (0409.0178) to the computer. The other end will be connected to the Logger Unit. For the Logger Unit use the trigger input port “ in” located on the bottom of the Box.

**NOTE:**

Please ensure that neither a Control Unit nor a CAN-Card is connected to the Analyzer Box!

- (2) Remove all (rechargeable) batteries from Logger Unit and plug off mains supply.
- (3) Press the white **flashing mode button** in the battery compartment



- (4) While pressing that button plug in the power pack or mains supply.
- (5) Hold the white button down for 10 seconds until the **LED light** on the side of the Logger Unit **blinks green >> yellow >> red**.



**Now the Logger Unit is prepared for updating.  
Go to “ 2.2 Execute Software Flash Program “ and follow the instructions.**

## 2.2 Execute Software Flash Program

With the Testo program “**Flash Update**” you can update the following instruments with the latest instrument software:

- testo 300 M/XL
- testo 314
- Control Unit testo 300XXL / Control Unit testo 350M/XL - testo 454
- Logger testo 454
- testo 400/650/950

### NOTE:



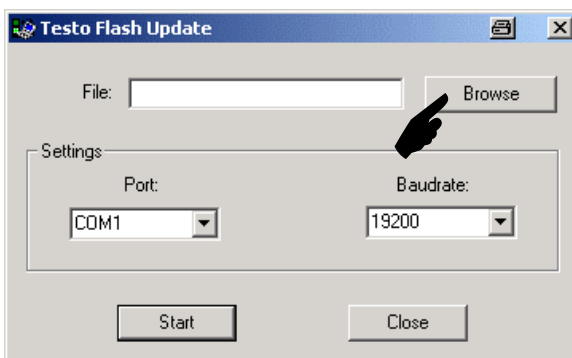
After starting the data transfer do not interrupt data communication. If the transfer is interrupted you have to start the procedure from the beginning.

### 2.2.1 Start “FlashUpdate” Program

Start your “**Windows Explorer**”, locate the folder where you placed the downloads in and start “**Flash Update**” by double-clicking on it.

### 2.2.2 Select Firmware File

After program-start the following window appears, where the firmware-file has to be selected:



### WARNING

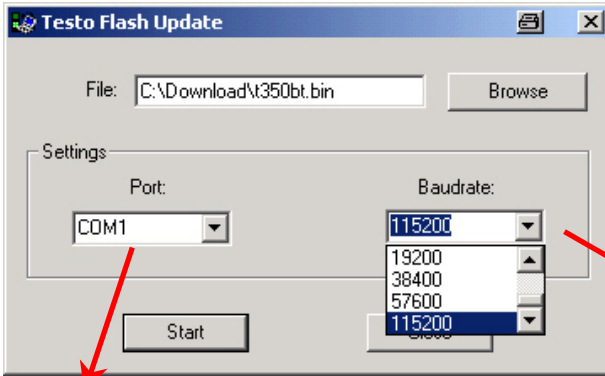
Please ensure to select the firmware-file which matches the connected instrument!

Otherwise the update will cause the instrument to no longer function!

If you have saved the downloads as recommended in the **download instructions** of this manual, please click on the “**Browse**” field and select the firmware-file you want to save to the instrument.

### 2.2.3 Check the Settings

Now check the right settings as described below:



#### Settings port

In case the default serial port is not available the following error message appears: **Open COM port failed.** In that case please try another port.

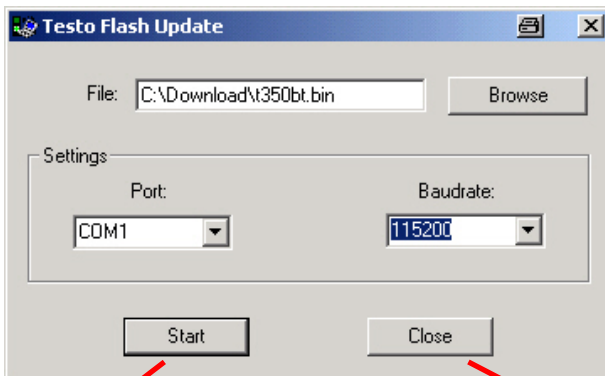
#### Settings baud rate

Please choose the respective baud rate as follows:

<i>Instrument</i>	<i>Baud rate</i>
testo 300 M/XL testo 400/650/950	38400
testo 454 Logger Unit	57600
Control Unit testo 300XXL / 350M/XL - testo 454	115200

### 2.2.4 Start Update Process

After checking the settings you can click on the “**Start**” button to start the update process. As example:



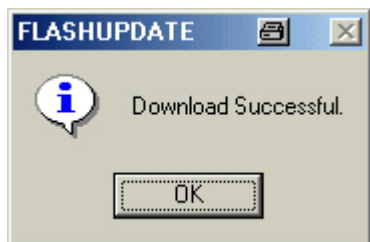
#### Start

By clicking on the “**Start**” button, you can start the update process.

#### Close

By clicking on the “**Close**” button you can interrupt data transfer and close the program.

After successfully updating your instrument the following message appears on the screen:



Please click the **OK** button, disconnect the serial cable from the instrument and replace the battery pack.



**NOTE:**

To update the next instrument (if necessary) go to page 7 and follow the same procedure as with the prior instrument.

Be sure to choose the right baud rate!

### 2.2.5 Messages

<b>Download successful</b>	=	instrument was updated successfully
<b>Dialog creation failed</b>	=	connection to instrument interrupted
<b>File not found</b>	=	firmware file was not found
<b>Open COM port failed</b>	=	serial port is not available
<b>Transfer canceled by user</b>	=	data transfer was interrupted
<b>Transfer canceled by receiver</b>	=	data transfer was interrupted by device
<b>Unknown error code</b>	=	an unknown error has occurred

## 3. Customer Service

If you have any questions on how to perform any of these procedures please contact us at:

**Testo AG**

Kolumban Kayser Str. 17

D 79853 Lenzkirch (Germany)

Phone: +49 (0) 7653 / 681 - 630

eMail: softwarehotline@testo.de